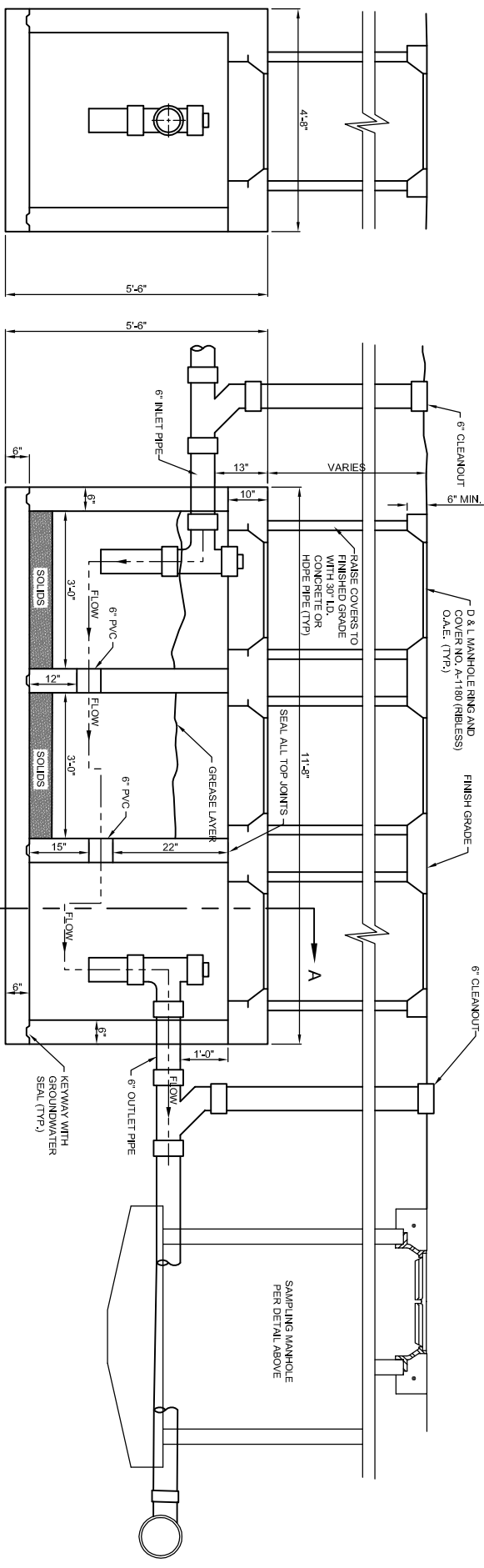
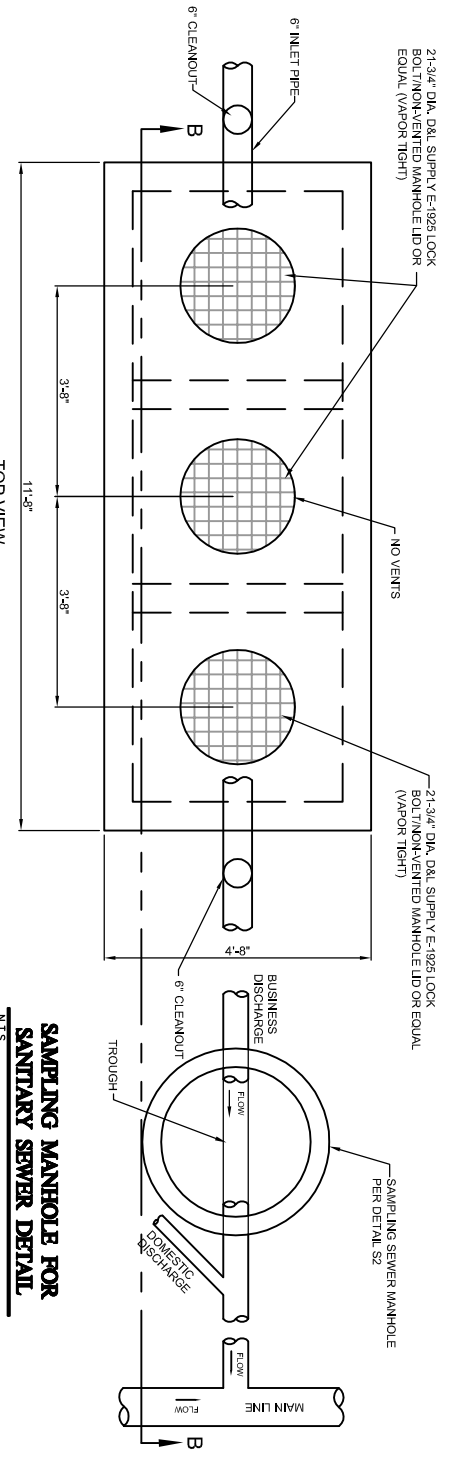


- SAMPLING MANHOLE NOTES:**
- MANHOLES IN ROADWAYS OR PARKING LOTS REQUIRE CONC. COLLAR, MANHOLES IN UNIMPROVED AREAS SHALL BE SET 6 INCHES ABOVE FINISH GRADE. (NO CONC. COLLAR REQUIRED)
 - MANHOLE LID, RING AND CONCRETE COLLAR TO BE SET 1/4 INCH BELOW TOP OF ASPHALT.

- INTERCEPTOR NOTES:**
- MATERIAL SPECS:
 - CONCRETE PORTLAND CEMENT TYPE II, MINIMUM COMPRESSIVE STRENGTH=4000 PSI
 - ASTM A815
 - REINFORCING BAR INTERMEDIATE GRADE 40 A185
 - UNIT COATED OUTSIDE WITH AN APPROVED PROTECTIVE COATING.
 - ALL DIMENSIONS ± NOT TO BE USED FOR CONSTRUCTION PURPOSES UNLESS CERTIFIED, PRECAST UNIT TO BE PLACED ON NATURAL SOIL.
 - STANDARD GROUND WATER SEAL, BUTYL ROPE MASTIC OR CEMENT MORTAR.
 - INTERCEPTOR MANHOLE COVERS TO BE SET FLUSH WITH ASPHALT OR CONCRETE PARKING LOT GRADES OR 6" MIN ABOVE GRADE IN UNFINISHED OR LANDSCAPE AREAS.



SECTION A-A VIEW

SECTION B-B VIEW

CONTACT CEDAR CITY WASTEWATER DEPARTMENT FOR FURTHER INFORMATION

**GREASE, OIL, & SAND INTERCEPTOR
DETAIL**

N.T.S.