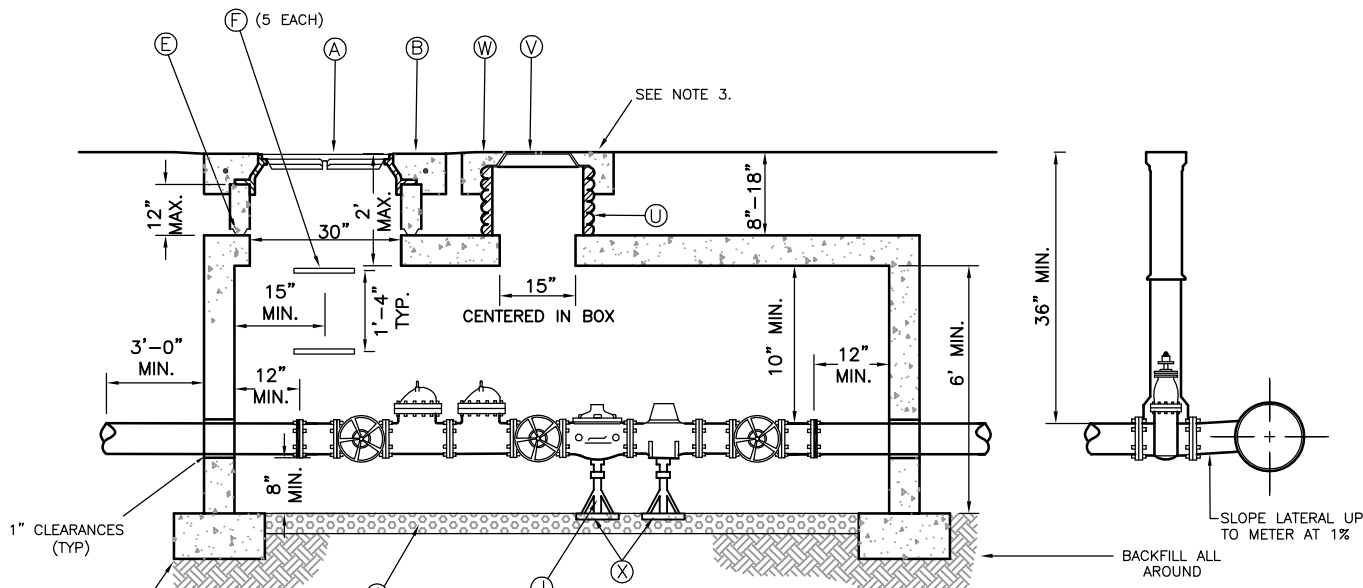


PLAN

N.T.S.



ELEVATION

N.T.S.

NOTES:

1. UNLESS OTHERWISE SHOWN ALL MATERIALS PER CEDAR CITY ENGINEERING STANDARDS.
2. CONCRETE VAULT LENGTH & WIDTH SHALL BE SUFFICIENT TO CONTAIN ALL FITTINGS AND MAINTAIN INDICATED CLEARANCE FROM WALLS.
3. WATER METER LIDS & COVERS SHALL ONLY BE INSTALLED IN LANDSCAPED AREAS UNLESS APPROVED BY WATER SUPERINTENDENT.
4. NOT ALLOWED ON PRIVATE SYSTEMS WITH FIRE HYDRANTS.
5. VAULTS ARE DESIGNED TO MEET ASTM C858 WITH AASHTO HS-20 LOADING.

LEGEND

NO.	ITEM	DESCRIPTION	NO.	ITEM	DESCRIPTION
(A)	MANHOLE RING AND COVER (RIBLESS)	D&L A-1180 O.A.E.	(P)	DUCTILE IRON PIPE (TO OUTSIDE OF VAULT)	CEMENT LINED
(B)	4" x 8" THICK CONCRETE COLLAR	W/ 40" x #4 BARS & FIBERS	(Q)	GATE VALVE WITH BOX	SEE W1
(C)	NOT USED		(R)	FIRE LOOP OR CITY WATER MAIN	
(D)	NOT USED		(S)	FLANGED SPOOL 12" LONG	
(E)	GRADE RING(S)	MUST BE SEALED	(T)	1 1/2" PIPE TAP WITH GATE VALVE AND 4" NIPPLE	
(F)	MANHOLE STEP	(M.A. INDUSTRIES INC. O.A.E.)	(U)	18" DIA. HDPE PIPE	PER PIPE SPEC
(G)	CONCRETE VAULT TOP	AMCOR UV6127T O.A.E.	(V)	RING & LID w/ 2" PUNCHOUT	D&L-2241 O.A.E.
(H)	9" x 18" FOOTING W/ 3-#4 BARS		(W)	30"x30"x8" THICK CONCRETE COLLAR	
(I)	4" THICK DRAIN GRAVEL		(X)	12" x 12" x 2" CONCRETE BLOCK	
(J)	(2) LEVELING JACKS (LENGTH VARIES)	SLIDEWINDER PART #23535 BY BARKER MANUF. CO.			
(K)	6" MIN. FLANGE ADAPTOR	CEMENT LINED			
(L)	GATE VALVE WITH HANDWHEEL	NON-RISING STEM			
(M)	FLOW METER (PURCHASED FROM CITY)	METRON SPECTRUM			
(N)	PRESSURE REDUCING VALVE (IF REQ'D)				
(O)	BACKFLOW PREVENTER (IF REQ'D)				

SHEET NO.
W6
FILE: W06

3"-4" WATER METER
(COMBINED CULINARY & FIRE SPRINKLER FLOWS)



CEDAR CITY
10 NORTH MAIN STREET
CEDAR CITY, UTAH 84720
PH. (435) 586-2963

SCALE: N.T.S.	DATE: 8/2019
DRAWN: T.B.M.	CHECKED: K.C.W.