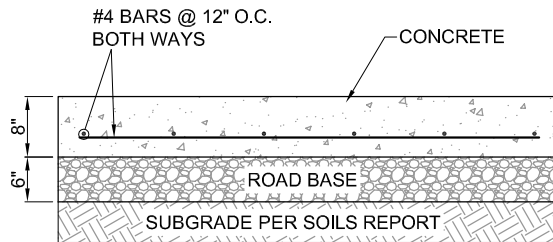


PLAN VIEW

N.T.S.

NOTES:

1. FALSE RADIUS ONLY ALLOWED WHERE APPROVED BY CITY ENGINEER.
2. CURB & GUTTER TO FLOW AWAY FROM FALSE RADIUS UNLESS STORM WATER FLOW IS ROUTED INTO A STORM DRAIN VIA A CURB INLET BOX AS SHOWN.
3. FALSE RADIUS TO BE ADAPTED TO CONDITION IN FIELD AS APPROVED BY CITY ENGINEER.



SECTION A-A

N.T.S.

SHEET NO.

C7

FILE: C07

FALSE RADUIS DETAIL

CEDAR CITY
 10 NORTH MAIN STREET
 CEDAR CITY, UTAH 84720
 PH. (435) 586-2963

SCALE: N.T.S.

DATE: 8/2019

DRAWN: T.B.M.

CHECKED: K.C.W.